



**Release notes :** MagnaView 4.2

**March 1, 2010**

## **MagnaView 4.2**

**Impact is only minutes away**

## Improved in MagnaView 4.2

---

MagnaView 4.2	3
New Designer functionality <i>Designer only</i>	4
Drag and drop actions	4
Dutch and Italian Viewers	5
K-Means clustering <i>Designer only</i>	5
New layout types <i>Designer only</i>	6
Nice numbers <i>Designer only</i>	7
New actions <i>Designer only</i>	7
Web Live 4.2	8
MagnaView Pathos	9
MagnaView Cum Laude	9
MagnaView MicroLab	9

## **MagnaView 4.2. is out!**

---

Thank you for checking the MagnaView 4.2. release notes! Below, please find information about the improvements we've made in the new release. MagnaView 4.2 again aims at helping your organization get more impact from your data and a larger return on investment from BI-investments. We constantly improve MagnaView:

- to help BI-professionals analyze data, and create attractive, interactive visual presentation for end users fast and easy.
- to really enable end users to perform their own interactive analyses.
- to integrate advanced analytics in the everyday context of users.

In 4.2. you will find the following features to help achieve this.

### *User friendly analysis and exploration*

- New **Designer functionality** that dramatically increases the Designer user experience. Create and change new views in a matter of seconds.
- Making changes to views is now possible by easy **drag and drop** of attributes into or out of views.
- MagnaView Viewer is now available in **Dutch** and **Italian**, bringing Viewer functionality closer to large groups of users.
- K-means **clustering** helps users find patterns in their data.

### *Presentation*

- When you create a map MagnaView by default uses **Nice numbers** to create categories. This results in categories such as 2-4, 4-6, etc instead of maps like 2.56-3.97, 3.97-5.38.
- Various new view types are available such as a **cross-graph**, a **calendar** view, an improved **scatter plot**, an **age pyramid**, **radar plot** and the **bubble chart**. Moreover, we have improved **table** layouts.

### *Enterprise Suite*

- **Web Live**, MagnaView's browser front-end has been improved. Amongst others, selection of tiles is now possible, as well as drag and dropping.

### *Special products*

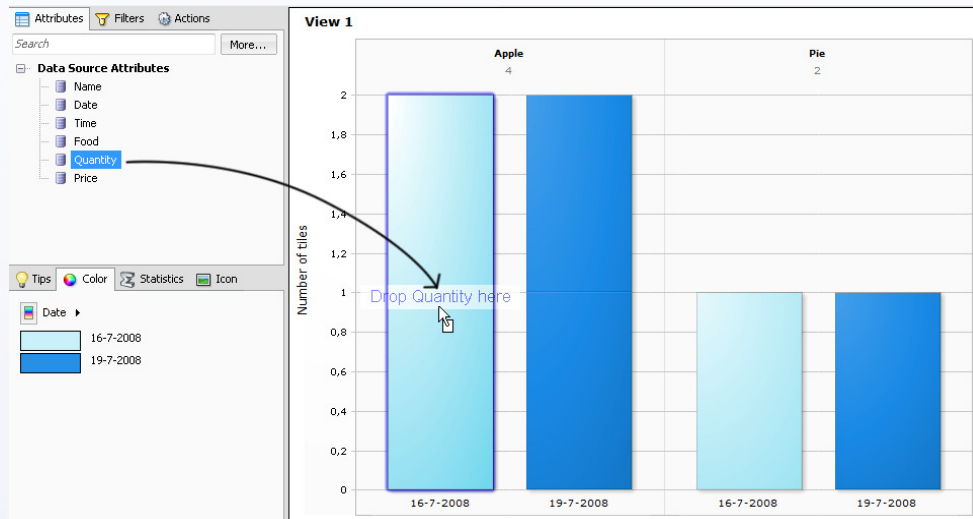
- MagnaView **Pathos** provides pathologists with a means to analyze and search through the enormous amount of test results they collect throughout the year.
- MagnaView **Cum Laude** was improved to meet the growing demand of educational institutions.
- MagnaView **MicroLab** provides microbiological laboratories with information about requests, production and resistance.

## New Designer functionality

MagnaView 4.2. offers dramatic improvements in the way you can create and change views. You can develop advanced visualizations faster than ever before! This makes it possible to perform your analyses in a matter of seconds.

Changing views is now possible with easy *drag and drop* of attributes into and out of views. This is particularly useful for users that wish to use the broad array of possible views

Create a calendar, treemap, pie chart, bubble chart, age pyramid, etc. by simply using your mouse.



## Drag and drop actions

Business Intelligence is moving from merely *viewing* data to really *interacting* with data. Besides traditional OLAP functions such as drill, slice-and-dice and filter, users should be allowed to move their data and use it in classification, sorting and searching tasks. 4.2. has new actions on board that allow users to move tiles between categories.

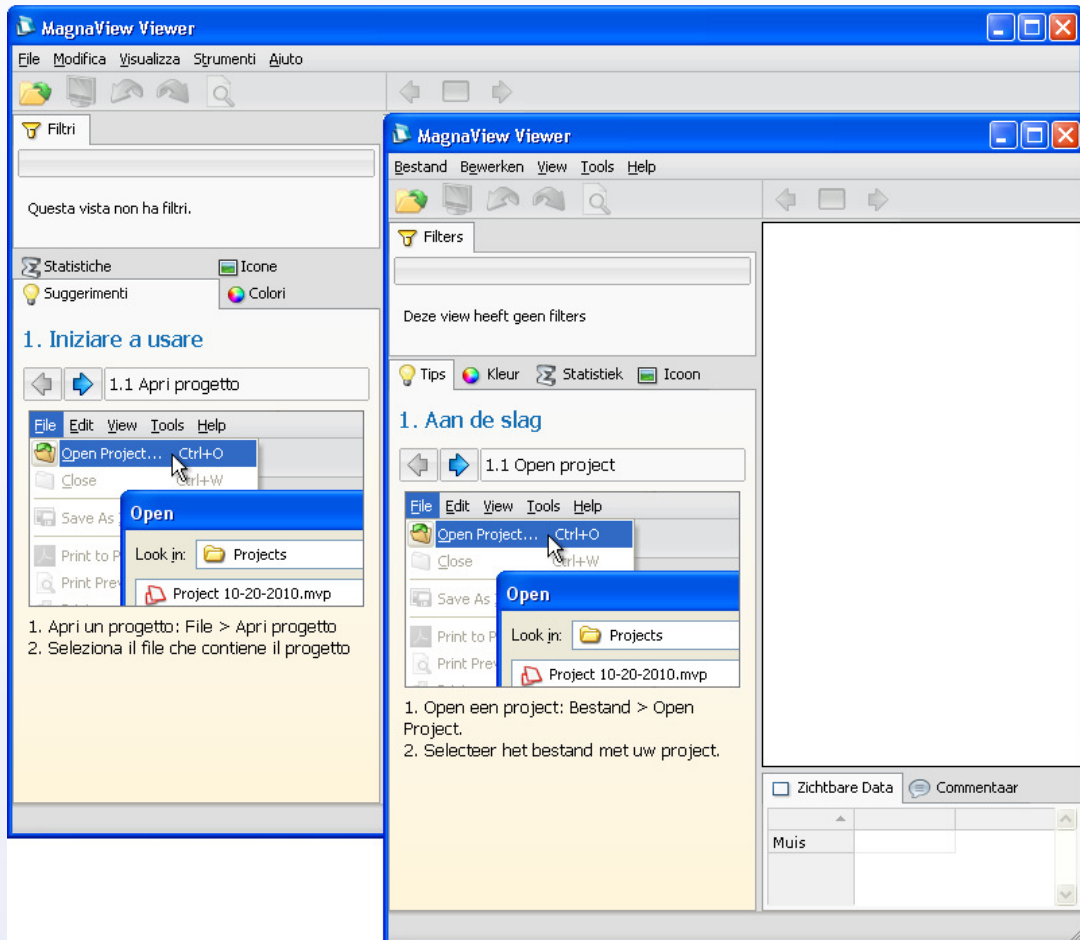
The actions introduced in MagnaView 4.1, can now be used in combination with drag and dropping. This allows you to add your own drag and drop functionality to a view.

## Dutch and Italian Viewers

MagnaView Viewer is now available in a Dutch version.

Moreover, we are proud to announce that Bicon3, MagnaView reseller for Italy, and MagnaView have jointly created an Italian Viewer.

Bicon3 can also provide support for setting up Italian version of Web Live. For a demo, see <http://itdemo.saas.magnaview.nl/>.



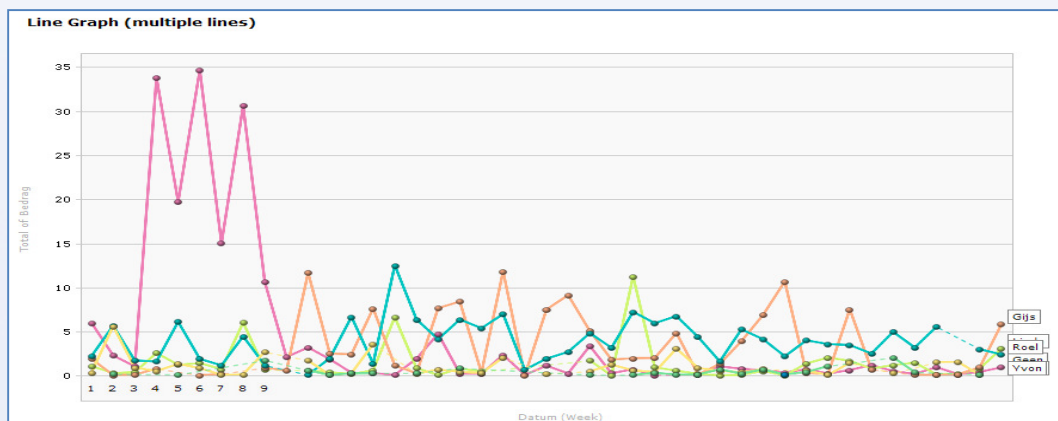
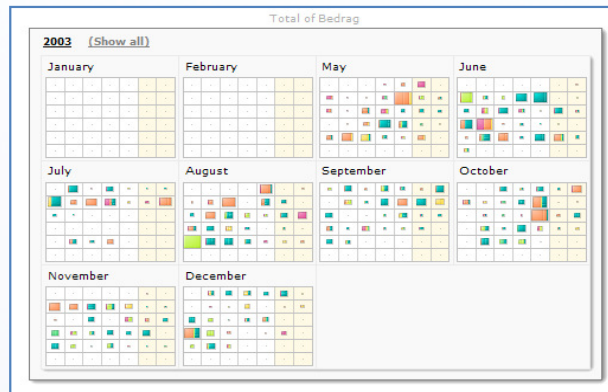
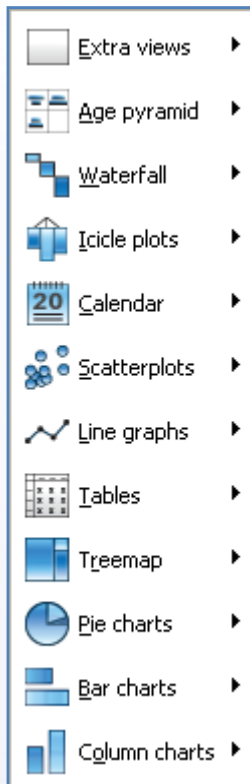
## K-means clustering

Users often find themselves with datasets with many attributes. Think for instance of a dataset with 400 attributes per patient in a health care dataset. To find out what attributes are responsible for for instance a disease, visually inspecting the dataset would be too time consuming. To help users find out what is relevant in the dataset, we have implemented an important improvement in 4.2.

MagnaView 4.2. contains an easy to use implementation of so-called K-means clustering. K-means is a technique that helps users sort data in clusters. Clustering is available as an Action for users of Designer Pro, and can be set up to help End users select attributes they want to investigate mouse-click only.











## New layout types

The new Designer functionality comes with a set of new and improved layouts.



## Nice numbers

When creating maps that bin numerical or date-time values, by default, nice numbers are used for binning. This results in categories such as 2-4, 4-6, etc instead of maps like 2.56-3.97, 3.97-5.38.

Categories	Type	Color	Min	Max	Icon
[-] Bedrag (Equidistant ranges) (l...					
<input checked="" type="checkbox"/> 0 - 2	Range		0	2	...
<input checked="" type="checkbox"/> 2 - 4	Range		2	4	...
<input checked="" type="checkbox"/> 4 - 6	Range		4	6	...
<input checked="" type="checkbox"/> 6 - 8	Range		6	8	...
<input checked="" type="checkbox"/> 8 - 10	Range		8	10	...
<input checked="" type="checkbox"/> 10 - 12	Range		10	12	...
<input checked="" type="checkbox"/> 12 - 14	Range		12	14	...
<input checked="" type="checkbox"/> 14 - 16	Range		14	16	...
<input checked="" type="checkbox"/> Empty value	Empty				...
<input type="checkbox"/> Outside Range Defined	Other				...

## New Actions (Designer Pro)

Since release 4.1., MagnaView offers a new possibility, *actions*, for setting up simple and complex tasks which end users can carry out mouse-click only. Actions were included in MagnaView to simplify and speed up user interaction, reducing the number of mouse-clicks the user needs to navigate among views in a project.

### New actions

In 4.1., actions were made available:

- Go To View
- Set Filter
- Set Filter - Next/Previous Value
- Set Attribute
- Set Attribute Map - Value(s) to Category
- Set Attribute Map - Clear Category
- Open URL
- Open Project
- Open Application
- Save Image

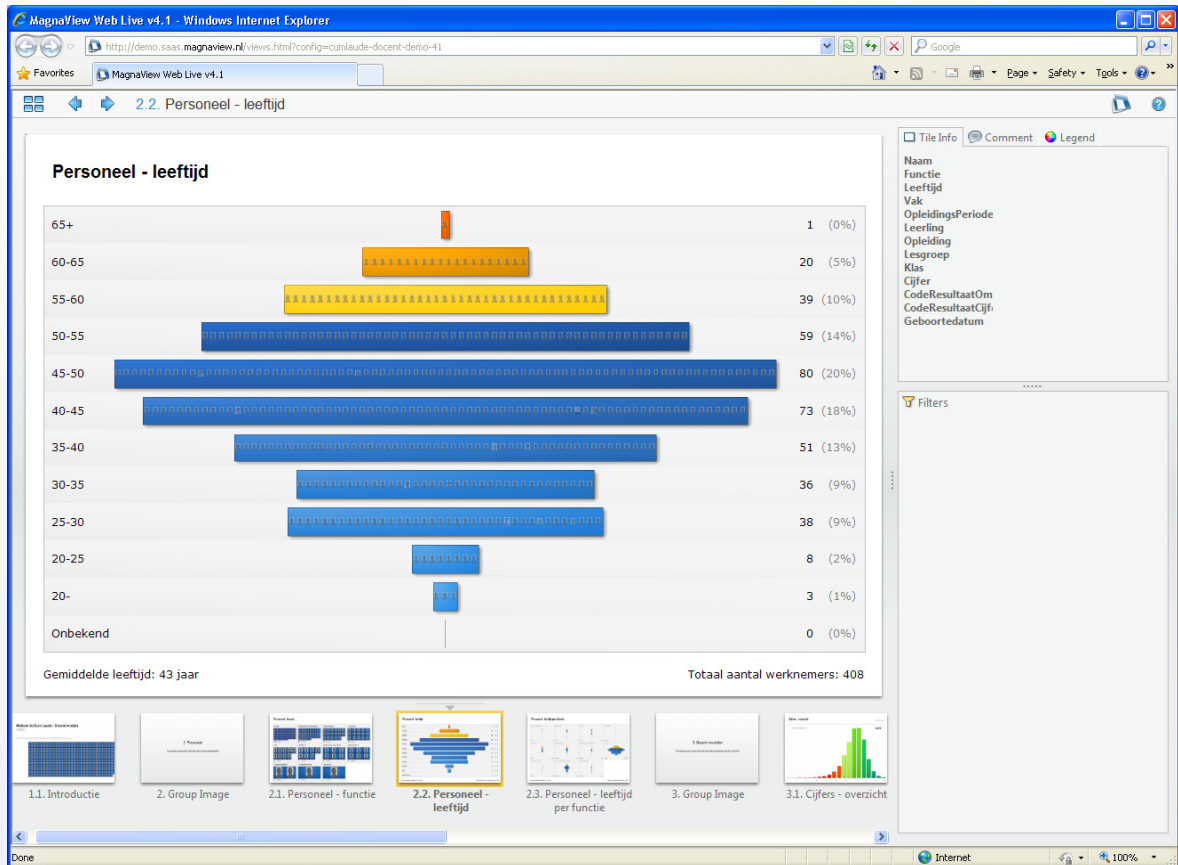
In 4.2., the following actions were added:

- **Copy to Clipboard**  
To copy information from a MagnaView project to the clipboard.
- **Zoom**  
To zoom into a part of a view.
- **Set Attribute by Dialog**  
To set the value of an attribute, using a combo box in the view.
- **Cluster data**  
To cluster data using an action.

## Web Live 4.2

### Web Live 4.2.

- Selections of tiles can be made by dragging your mouse over a view in your browser.
- Drag and dropping in WebLive is now also possible.
- The zoom action can be used.
- Views can have custom width and height and are not restricted to the viewport size anymore.



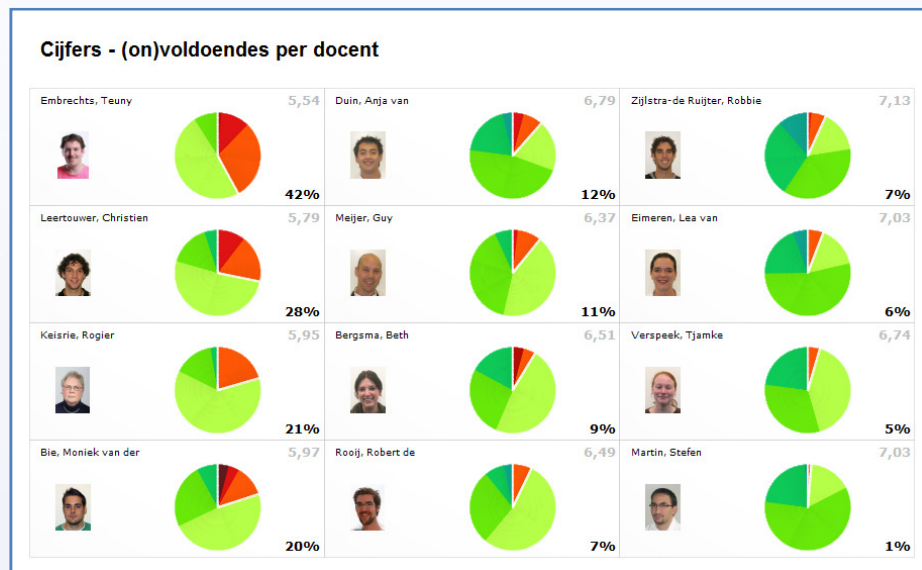
**Special products: *Pathos* for Pathologists**

MagnaView **Pathos** provides pathologists with a means to analyze and search through the enormous amount of test results they collect throughout the year.

**Special products: *Cum Laude* for Education**

MagnaView Cum Laude, our special product for Education, was released in 2009. Because of growing demand, we are currently working together with Simac Onderwijs and Topicus to develop the web-version of MagnaView Cum Laude. It is connected to the Simac @VO3.0 school administration software which is completely web-based.

To find out more about Cum Laude, please contact us.



**Special products: *MicroLab* for Microbiology**

New modules for MagnaView MicroLab are available. MicroLab is MagnaView's product for data analysis in Microbiology, in particular for *Micros* by *Philips Medical Systems*.

